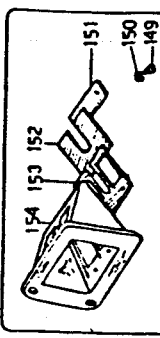
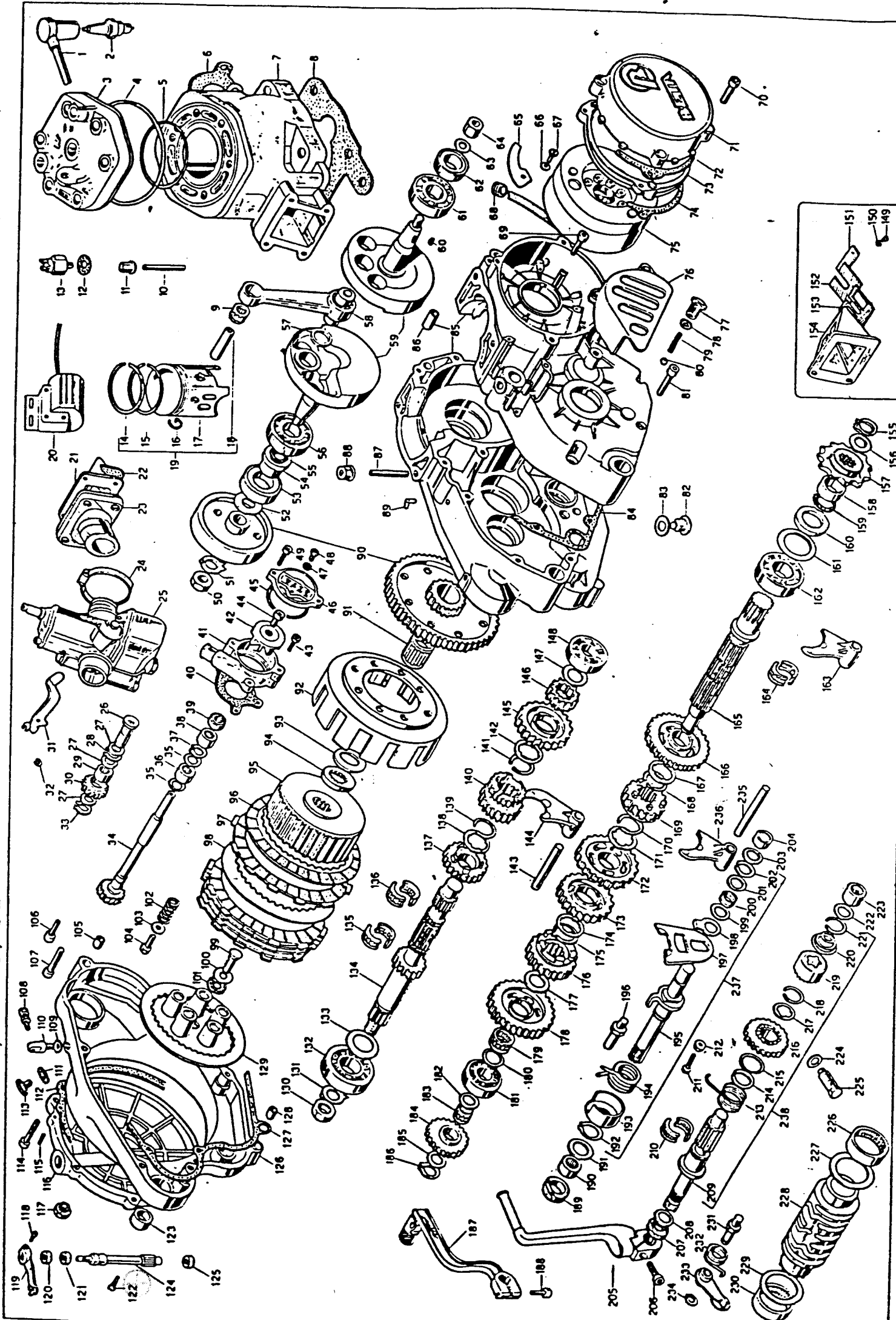


ENGINE ZERO 260/92



LISTA TAVOLA RICAMBI 37.6603.0.00 ENGINE ZERO-260/92

Riga	Articolo	Descrizione
1	27.1351.0.00	SPARK PLUG PROTECTOR
2	12.2510.0.00	SPARK PLUG CW 9L / N-3
3	19.1218.0.58	CYLINDER HEAD ZERO 260/91
4	10.6789.0.00	OIL SEAL 120.32.125.56.2.62
5	10.6719.0.00	OIL SEAL 88.62.92.18.1.78
6	16.8070.0.00	GASKET ZERO
7	12.5178.0.58	CYLINDER D.76 ZERO
8	16.6171.0.00	CYLINDER CRANKCASE GASKET ZERO
9	14.1675.0.00	NEEDLE BEARING 18.22.25
10	25.9714.0.00	STUD BOLT 8.57
11	13.1711.0.00	NUT M8
12	16.4950.0.00	GASKET 8.20.1.5
13	29.1196.0.00	THERMOSTAT ZERO
14	28.5217.0.00	PISTON RING D.76 ZERO
15	28.5217.0.00	PISTON RING D.76 ZERO
16	10.4260.0.00	CIRCLIP 18
17	25.6657.0.00	PISTON 76 ZERO
18	28.9410.0.00	PISTON PIN 18.60
19	25.8667.8.00	ELECTRONIC PISTON D.76 ZERO
20	11.2056.0.00	ELECTRONIC H.T. COIL
21	31.0509.8.00	REED VALVE TR-32
22	16.9253.0.00	VALVE GASKET 200-TR/RV
23	27.2337.0.00	INLET MANIFOLD TR-34
24	15.1538.0.00	CLAMP 25/45
25	12.0487.0.00	CARBURETOR PHB 26 ZERO
26	25.5714.0.00	FUEL MIXER DRIVING PIN RX/85
27	27.5850.0.00	WASHER 10.17
28	22.2710.0.00	SEEGER 10E
29	11.2210.0.00	NEEDLE BEARING 10.14.10
30	18.8260.0.00	GEAR
31	21.2750.0.00	LEVER ZERO
32	28.2257.0.00	SEEGER D.5 ZERO
33	28.2270.0.00	SEEGER 10E
34	10.2770.0.00	COUNTER SHAFT ZERO
35	10.2771.0.00	COUNTER SHAFT ZERO-92
36	27.5850.0.00	WASHER 10.17
37	11.2210.0.00	NEEDLE BEARING 10.14.10
38	11.2210.0.00	NEEDLE BEARING 10.14.10
39	10.4652.0.00	OIL SEAL 10.18.5/8
40	16.7586.0.00	PUMP GASKET ZERO
41	31.2186.0.58	PUMP BODY ZERO
42	31.2182.0.00	PUMP FAN 4H/PH
43	31.3001.0.00	PUMP FAN ZERO-92
44	31.2991.0.00	SCREW 5.12
45	28.2266.0.00	SEEGER 9E
46	10.6687.0.00	OIL SEAL 34.65.38.61.1.78
47	12.6796.0.58	PUMP COVER ZERO
48	16.4750.0.00	GASKET 6.12.1.5
49	31.8000.0.00	SCREW 6.7
50	13.2900.0.00	SCREW 5.12
51	27.7476.0.00	SPECIAL NUT 14.1.25.8,5
52	22.3197.0.00	SPRING ZERO
53	10.6500.0.00	OIL SEAL 30.52.10
54	13.5516.0.00	SPACER ZERO
55	12.6463.0.00	OIL SEAL 20.24.25.48.2.62
56	12.9946.0.00	BALL BEARING 25.62.17 NYLON
57	27.7362.0.00	WASHER 22.38.1
58	11.0369.8.00	CONNECTING ROD ASSY TR-32
59	10.0041.0.00	CRANKSHAFT TR-34/CAMP.
60	12.4600.0.00	WOODRUFF KEY 3.3.7.9,7
61	12.9946.0.00	BALL BEARING 25.62.17 NYLON
62	10.6466.0.00	OIL SEAL 25.40.7
63	27.5775.0.00	SPECIAL WASHER
64	13.2710.0.00	SPECIAL NUT 12.1.25.17
65	25.5805.0.00	PLATE
66	27.3480.0.00	WASHER 4.14
67	31.2480.0.00	SCREW 4.14
68	28.9150.0.00	SILENT BLOCK
69	31.2480.0.00	SCREW 4.14
70	31.3105.0.00	SCREW 4.14
71	12.6767.0.58	MAGNETO COVER ZERO-91
72	12.7511.0.00	MAGNETO COVER GASKET
73	12.6767.0.60	INTERNAL MAGNETO COVER ZERO
74	16.7509.0.00	MAGNETO COVER GASKET TR-125

LISTA TAVOLA RICAMBI 37.6603.0.00 ENGINE ZERO-260/92

Riga	Articolo	Descrizione
75	31.0328.0.00	ELECTRIC FLYWHEEL ZERO
76	12.7308.0.58	PINION COVER ZERO-91
77	11.7300.0.00	HOLLOW BOLT
78	16.5200.0.00	GASKET 12.16.1,5
79	22.4500.0.00	HOLLOW BOLT SPRING
80	28.8935.0.00	BALL 5/16
81	31.6351.0.00	MAGNETIC PLUG
82	29.0045.0.00	GASKET 16.22.5.1
83	16.5360.0.00	CRANKCASE GASKET 250-RX/85
84	12.0617.0.60	CRANKCASE ZERO HB
85	16.4001.0.00	DMEL 10.30
86	25.8097.0.00	STUD BOLT 8.50
87	13.1712.0.00	NUT M8
88	27.2338.0.00	BREATHER PIPE HOSE TR-32
89	29.0725.0.00	PRIMARY DRIVE TR/92
90	16.1718.0.00	NEEDLE BEARING 20.26.20
91	12.2075.0.00	CLUTCH HOUSING TR-34/CAMP.
92	27.7363.0.00	WASHER 20.30.0,5
93	27.4587.0.00	WASHER TR-89
94	29.1019.0.00	CLUTCH CENTER TR-89
95	13.4355.0.00	CLUTCH PLATE TR-92
96	13.4355.0.00	CLUTCH PLATE TR-92
97	13.3835.0.00	STEEL PLATE TR-92
98	25.4510.0.00	TOOTHED CLUTCH PIN TR-34/CAMP.
99	27.7405.0.00	WASHER
100	16.1136.0.00	NEEDLE BEARING 10.22.2,8
101	23.2524.0.00	CLUTCH SPRING TR-34/R
102	27.5750.0.00	WASHER 6.16.1
103	11.4901.0.00	BOLT 6.20
104	16.3701.0.00	DMEL 9.15
105	31.4500.0.00	SCREW 6.30
106	31.4851.0.00	SCREW 6.35
107	27.2701.0.00	CLUTCH ADJUSTER WITH NUT
108	16.4900.0.00	GASKET 8.14.1,5
109	23.1301.0.00	RATCHET
110	16.5380.0.00	GASKET 16.22.5.1
111	29.1059.0.00	EXT.CLUTCH COVER GASKET TR/89
112	16.7359.0.00	OIL PLUG
113	31.3105.0.00	SCREW 6.15
114	16.3570.0.00	DMEL TR/89
115	12.6310.0.58	EXT.CLUTCH COVER ZERO-92
116	29.1003.0.00	OIL PLUG ZERO-91
117	31.2680.0.00	SCREW 4.14
118	10.4370.0.00	CLUTCH PIN LEVER
119	10.4370.0.00	OIL SEAL 8.20.7
120	11.2230.0.00	NEEDLE BEARING 14.20.12
121	31.8800.0.00	SPECIAL SCREW
122	11.3105.0.00	SINTERED BUSH 125-81
123	25.4399.0.00	CLUTCH PIN TR-240
124	11.2207.0.00	NEEDLE BEARING 9.13.10
125	12.6264.0.58	CLUTCH COVER ZERO-91
126	16.7157.0.00	CLUTCH COVER GASKET 125-81
127	16.3701.0.00	DMEL 9.15
128	12.2571.0.00	PRESSURE PLATE TR-34/CAMP.
129	19.2895.0.00	S/ARM SPECIAL NUT 14.1.25.7
130	27.7476.0.00	WASHER 14
131	12.9900.0.00	BALL BEARING 20.52.15
132	12.9900.0.00	BALL BEARING 20.30.0,5
133	27.7363.0.00	WASHER 20.30.0,5
134	10.2333.8.00	MAIN SHAFT TR-34/CAMP.
135	16.1487.0.00	NEEDLE BEARING 16.21.10 -2 PCS
136	16.1487.0.00	NEEDLE BEARING 16.21.10 -2 PCS
137	18.3849.8.00	5TH GEAR - MAINSHAFT
138	28.2545.0.00	SEEGER 19 SH
139	28.2545.0.00	SEEGER 19 SH
140	18.3769.8.00	3/4 GEAR - MAINSHAFT
141	28.2545.0.00	SEEGER 19 SH
142	27.7386.0.00	SPECIAL WASHER
143	25.5106.0.00	SELECTOR PIN 10.87 125/76
144	13.4456.0.00	SELECTOR FORK 28.15 125-76
145	18.3877.8.00	6TH GEAR - MAINSHAFT
146	18.3221.8.00	2ND GEAR - MAINSHAFT
147	27.6450.0.00	WASHER 15.25
148	12.9400.0.00	BALL BEARING 15.35.11
149	31.2302.0.00	SCREW 3.8
150	27.3401.0.00	WASHER 3
151	25.5768.0.00	PETAL FIXING PLATE 4M/PH

LISTA TAVOLA RICAMBI 37.6603.0.00 ENGINE ZERO-260/92

Riga	Articolo	Descrizione
152	21.1545.0.00	OUTER PETAL
153	21.1540.0.00	INNER PETAL
154	31.1334.0.00	REED VALVE TR-32/FD
155	28.2540.0.00	SEEGER 20 E
156	27.7386.0.00	SPECIAL WASHER
157	25.4081.0.00	SPROCKET Z.10
158	13.5521.0.00	SPROCKET SPACER
159	10.6644.0.00	OIL SEAL 20.35.23.91.1.78
160	10.6456.0.00	OIL SEAL 25.37.5
161	27.7415.0.00	WASHER 27.45.0,5
162	12.9900.0.00	BALL BEARING 20.52.15
163	15.6425.0.00	SELECTOR FORK 32.5 TR-200/83
164	16.1657.0.00	NEEDLE BEARING 18.22.10 -2 PCS
165	10.2933.8.00	LAYSHAFT TR-90
166	18.5311.8.00	2ND GEAR - LAYSHAFT TR-34
167	27.7387.0.00	SPECIAL WASHER
168	28.2546.0.00	SEEGER 20 SM
169	18.6711.8.00	4TH GEAR - LAYSHAFT TR-34
170	28.2546.0.00	SEEGER 20 SM
171	27.7387.0.00	SPECIAL WASHER
172	18.5891.8.00	3RD GEAR - LAYSHAFT
173	18.6479.8.00	4TH GEAR - LAYSHAFT
174	27.7387.0.00	SPECIAL WASHER
175	28.2546.0.00	SEEGER 20 SM
176	18.6641.8.00	5TH GEAR - LAYSHAFT
177	27.7256.0.00	WASHER 18.27.0,2
178	18.4307.8.00	1ST GEAR - LAYSHAFT
179	16.1456.0.00	NEEDLE BEARING 18.22.10
180	27.6450.0.00	WASHER 15.25
181	12.9400.0.00	BALL BEARING 15.35.11
182	27.6450.0.00	WASHER 15.25
183	16.1286.0.00	NEEDLE BEARING 15.19.10
184	18.6780.0.00	GEAR
185	27.6450.0.00	WASHER 15.25
186	28.2360.0.00	SEEGER 15E
187	21.2113.0.00	SHIFT LEVER ZERO-91
188	11.4951.0.00	BOLT 6.25
189	10.4800.0.00	OIL SEAL 12.22.5
190	11.2250.0.00	NEEDLE BEARING 12.18.12
191	27.6000.0.00	WASHER 12.22
192	28.2490.0.00	SEEGER 18.1.1 E
193	28.1595.0.00	SPRING RETAINER
194	28.1700.0.00	SELECTOR SPRING
195	10.1316.0.00	SELECTOR SHAFT 125-76
196	25.4322.0.00	PIN FOR RETURNING SPRING
197	31.2096.0.00	SHIFT CONTROL FORK 125/76
198	27.7855.0.00	WASHER
199	27.6000.0.00	WASHER 12.22
200	22.6800.0.00	SHIFT CONTROL SPRING
201	27.6000.0.00	WASHER 12.22
202	28.12275.0.00	SEEGER 18E
203	27.6000.0.00	WASHER 12.22
204	11.2220.0.00	NEEDLE BEARING 12.18.12
205	21.5511.0.00	KICKSTARTER LEVER ZERO
206	31.4851.0.00	SCREW 6.35
207	10.5800.0.00	OIL SEAL 14.24.5
208	27.6750.0.00	WASHER 16.25
209	10.1510.8.00	STARTER SHAFT 125-CR/81
210	16.1657.0.00	NEEDLE BEARING 18.22.10 -2 PCS
211	31.4500.0.00	SCREW 6.30
212	13.1150.0.00	NUT 6.3.5
213	28.7897.0.00	KICKSTARTER SPRING 125/81
214	28.2545.0.00	SEEGER 19 SH
215	27.7362.0.00	WASHER 20.30.2
216	18.1640.8.00	STARTER GEAR 125-CR/81
217	27.7386.0.00	SPECIAL WASHER
218	28.2545.0.00	SEEGER 19 SH
219	22.1410.8.00	KICKSTARTER SLEEVE 125-CR/81
220	28.3656.0.00	CONICAL SPRING
221	28.2544.0.00	SEEGER 20 SM
222	27.6450.0.00	WASHER 15.25
223	11.2240.0.00	NEEDLE BEARING 15.21.12
224	16.3200.0.00	GASKET 12.16.1,5
225	11.6500.0.00	SPECIAL BOLT
226	11.2340.0.00	NEEDLE BEARING 30.37.12
227	27.7425.0.00	WASHER 30.38
228	12.1957.0.00	CAM ZERO-91

P.T.O P.T.O

ISTA TAVOLA RICAMBI 37.6603.0.00 ENGINE ZERO-260/92

q.ig.	Articolo	Descrizione
229	27.7425	0.00 WASHER 30.38
230	11.2340	0.00 NEEDLE BEARING 30.37.12
231	25.5500	0.00 PIN
232	22.3926	0.00 LOCATING SPRING 125-76
233	21.0901	0.00 LOCATING LEVER 250-6V
234	28.2265	0.00 SEEGER BE
235	25.5107	0.00 SELECTOR PIN 10.103.5
236	15.6437	0.00 SELECTOR FORK 34,5 125-76
237	10.1316	0.00 SELECTOR SHAFT 125-76
238	22.0500	0.00 COMPLETE KICKSTARTER 125-81

RICAMBI NON FIGURANTI

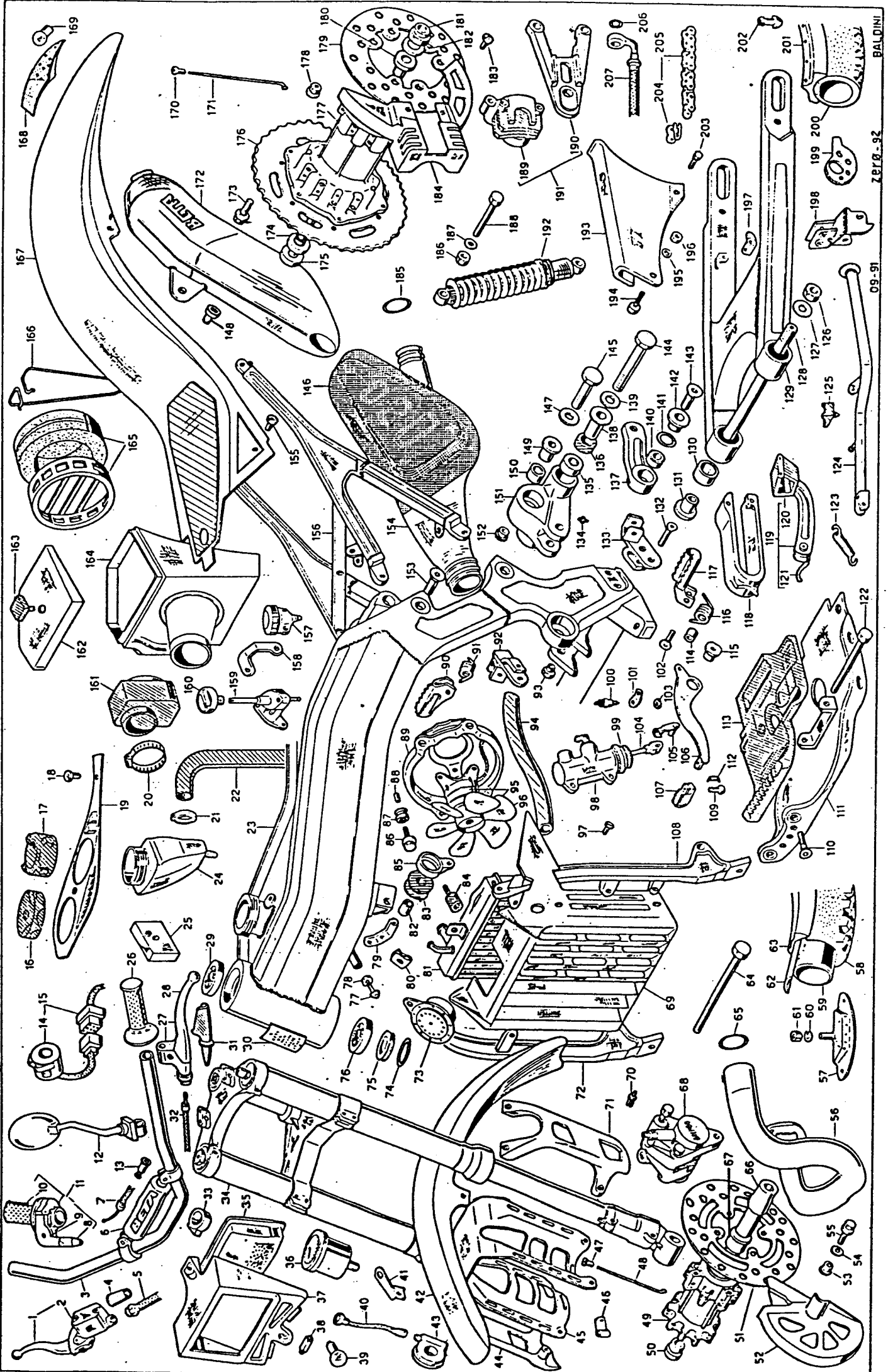
- 12.0049.0.00 GEARBOX TR-90
- 29.0725.0.00 PRIMARY DRIVE TR/92
- 28.0691.8.00 KIT OIL SEAL ZERO-92
- 28.0800.8.00 GASKET SET ZERO-92

PARTS FOR ENGINE 240 CC

- 12.5179.0.58 CYLINDER D.72,8 ZERO
- 25.8668.0.00 PISTON 72,8 ZERO
- 28.5218.0.00 PISTON RING D.72,8 ZERO
- 29.1219.0.58 CYLINDER HEAD ZERO 240/91

PARTS FOR ENGINE 125 CC

- 10.0059.0.00 CRANKSHAFT 125-CR/82
- 10.4257.0.00 CIRCLIP 16.1,2
- 10.4380.0.00 OIL SEAL 8.16.7
- 10.6617.0.00 OIL SEAL 13.19.3
- 10.6618.0.00 OIL SEAL 7.66.11,22.1,78
- 10.6630.0.00 OIL SEAL 17.86.23.10.2.62
- 10.6697.0.00 OIL SEAL 60.05.63.61.1.78
- 10.6698.0.00 OIL SEAL 107.67.111.23.1.78
- 11.0366.8.00 CONNECTING ROD ASSEMBLY 125-76
- 12.0492.0.00 CARBURETOR PHBM 26 TD ZERO 125
- 12.0418.0.00 CRANKCASE ZERO 125
- 12.2513.0.00 SPARK PLUG REC
- 12.5183.0.58 CYLINDER D.54 ZERO 125
- 12.6262.0.58 EXT. CLUTCH COVER TR-89
- 12.6959.0.58 MAGNETO COVER TR-125
- 13.3819.0.00 STEEL PLATE TR-34/CAMP.
- 13.4319.0.00 CLUTCH PLATE TR-34/CAMP.
- 13.4351.0.00 CLUTCH PLATE TR-34/CAMP.
- 13.5517.0.00 SPACER
- 14.1436.0.00 NEEDLE BEARING
- 16.5050.0.00 GASKET 10.15.1
- 16.5571.0.00 CRANKCASE GASKET 125-RX/85
- 16.6167.0.00 CYLINDER-CRANKCASE GASKET
- 16.8066.0.00 GASKET 125-76
- 22.6503.0.00 CLUTCH SPRING TR-34/CAMP.
- 25.6105.0.00 SPROCKET 11 TEETH TR-125
- 25.8612.0.00 PISTON D.54 ZERO-125
- 25.9812.0.00 STUD BOLT 8.60
- 27.6751.0.00 WASHER 16.26.1
- 28.0694.8.00 KIT OIL SEAL ZERO-125
- 28.0799.8.00 GASKET SET ZERO-125
- 28.5569.0.00 PISTON RING D.54 ZERO-125
- 28.9100.0.00 BREATHER PIPE
- 28.9386.0.00 PISTON PIN 16 125/76
- 29.0723.0.00 PRIMARY DRIVE TR-34/125 CAMP.
- 29.1213.0.58 CYLINDER HEAD ZERO 125
- 31.0329.0.00 FLYWHEEL TR-125 12V



LISTA TAVOLA RICAMBI 38.6635.0.00 MOTORCYCLE ZERO-92

Riga	Articolo	Descrizione
1	20.0300.0.00	FRONT BRAKE LEVER KIT
2	21.0229.0.00	FRONT BRAKE LEVER TR-32 FD
3	22.2043.0.00	HANDLEBAR ZERO-91
4	16.3403.0.00	GROMMET
5	29.0918.0.00	FRONT BRAKE HOSE ZERO
6	16.2559.0.63	HANDLEBAR RUBBER ZERO-92
7	29.1539.0.52	THRITTLE CABLE ZERO
8	20.0322.0.00	THRITTLE KIT
9	12.5594.0.00	THWIST GRIP COVER TR-34
10	22.1840.0.00	BRIP D.24 TRIAL
11	12.3509.0.00	THWIST GRIP
12	28.9292.0.00	REAR VIEW MIRROR TRIAL
13	16.3388.0.00	GROMMET
14	13.3444.0.00	SUITCH TR
15	18.0132.0.00	ELECTRIC EQUIPMENT ZERO
16	29.1051.0.00	TANK PLUG TRIAL
17	29.0140.0.00	RADIATOR CAP FOUR
18	31.3071.0.00	SCREEN 6.15
19	12.8901.0.59	TANK COVER ZERO-92
20	15.1550.0.00	CLAMP 48/68
21	15.1523.0.00	CLAMP 14/24
22	29.1573.0.00	UPPER RADIATOR TUBE ZERO-91
23	29.1116.0.61	FRONT FRAME ZERO-92
24	28.8583.0.00	LIVID TANK ZERO-91
25	27.2801.0.00	MOTOPLAT REGULATOR-12
26	22.1850.0.00	GRIP D.22 TRIAL
27	21.0239.0.00	CLUTCH LEVER TR-34
28	21.2700.0.00	CLUTCH LEVER ONLY TR-33
29	18.9830.0.00	CONICAL BEARING 20.42.15
30	25.5787.0.00	PLATE
31	16.3384.0.00	GROMMET
32	29.1463.0.52	CLUTCH CABLE ZERO
33	25.2522.0.52	FLATE
34	15.0796.0.00	REVERSE FORK ZERO-92
35	16.4703.0.00	OPTICAL GROUP ZERO
36	22.0934.0.00	SPEEDOMETER TR-33
37	22.2846.0.62	HEADLIGHT HOLDER ZERO-92
38	21.1559.0.00	BULB 12V-10W
39	21.1564.0.00	BULB 12V-25/25W ZERO
40	28.9723.0.00	SPEEDOMETER CABLE ZERO
41	28.9723.0.00	SPEEDOMETER CONTACT ZERO
42	25.1517.0.62	FRONT FENDER ZERO-92
43	27.3246.0.00	SPEEDO-DRIVE ZERO
44	25.9873.0.62	RH FORK TUBE PROTECTION ZERO-92
45	28.9938.0.00	FENDER BRACKET ZERO
46	15.1460.0.00	CLIP W. RUBBER 10X15
47	25.1010.0.00	NIPPLES D.3
48	27.2418.0.00	FRONT SPOKE ZERO
49	28.0714.0.58	FRONT HBU SPACER ZERO-92
50	13.8546.0.00	RH FRONT HUB SPACER ZERO-91
51	13.3941.0.00	FRONT BRAKE DISK ZERO
52	12.8824.0.62	FRONT DISK BRAKE COVER ZERO-92
53	13.4200.0.00	SPACER TR-89
54	22.3198.0.00	CUP SPRING TR-89
55	31.3078.0.00	SCREW 6.20
56	29.1624.0.00	EYHAUST PIPE ZERO-92
57	15.1730.0.00	TIRE FASTENER
58	18.7940.0.00	TIRE 2.75-21 TR-125
59	12.1641.0.00	TUBE 2.75-21 MICHELIN
60	27.4800.0.00	WASHER 8
61	13.1700.0.00	NUT 8
62	15.3820.0.00	BEAD 21.25
63	12.4247.0.00	FRONT RIM ZERO
64	11.5747.0.00	BOLT B.140
65	10.6710.0.00	OIL SEAL 52.07.57.31.2.62
66	25.5278.0.00	FRONT WHELL AXLE ZERO-92
67	13.5474.0.00	LH FRONT HUB SPACER ZERO-91
68	25.0311.0.00	FRONT BRAKE PLIERS TR-89
69	15.2350.0.62	RADIATOR COVER ZERO-92
70	18.6450.0.00	EXPANDER RIVET
71	25.9894.0.62	LH FORK TUBE PROTECTION ZERO-92
72	29.1117.0.61	RH FRONT FRAME ZERO-92
73	10.0920.0.00	HORN TR-33
74	10.6684.0.00	OIL SEAL 34.60.39.84.2.62
75	10.6739.0.00	F/FORK ALUMINIUM RING
76	12.9830.0.00	CONICAL BEARING 20.42.15
77	31.4399.0.00	SCREW 8.25
78	13.1700.0.00	NUT 8
79	28.9724.0.00	HORN BRACKET ZERO
80	25.5804.0.00	FIXING PLATE

LISTA TAVOLA RICAMBI 38.6635.0.00 MOTORCYCLE ZERO-92

Riga	Articolo	Descrizione
81	27.2344.0.00	RADIATOR ZERO-91
82	13.5455.0.00	SPACER
83	28.9191.0.00	SILENT BLOCK
84	28.9193.0.00	RADIATOR SILENT BLOCK ZERO
85	11.1766.0.00	CONNECTING ROD ZERO-91
86	11.4905.0.00	BOLT 6.20
87	28.9130.0.00	SILENT BLOCK
88	11.2850.0.00	FENDER BUSH
89	28.9801.0.52	ELECTRIC FAN BRACKET ZERO
90	25.3300.0.00	R/H FOOTREST TR-33
91	22.6201.0.00	FOOTREST SPRING
92	28.9923.0.00	RH FOOTREST BRACKET ZERO
93	11.2640.0.00	BUSH ZERO
94	29.1543.0.00	RADIATOR TUBE ZERO
95	14.0101.0.00	COMPL. ELECTRIC FAN ZERO-91
96	31.2133.0.00	FAN ZERO
97	31.2981.0.00	SCREW 5.12
98	25.9116.0.00	REAR BRAKE PUMP TR-34/CAMP.
99	16.3392.0.00	GROMMET FOR 25.9116
100	18.8700.0.00	STOP SWITCH TR-33
101	28.9266.0.00	SWITCH STOP BRACKET ZERO
102	11.5570.0.00	BOLT 8.45
103	13.2182.0.00	NUT
104	10.8401.0.00	REAR BRAKE ROD ZERO
105	28.9313.0.00	PUMP PIN W/SPRING
106	23.2805.0.00	BRAKE PEDAL
107	22.9005.0.00	FOOTREST HUB
108	29.1118.0.61	LH FRONT FRAME ZERO-92
109	25.2445.0.00	BRAKE PEDAL PIN TR-34
110	31.4394.0.00	SCREW 8.25
111	12.2215.0.00	BUMPER ZERO
112	22.2215.0.00	REI. BRAKE PEDAL SPRING 84
113	18.2331.0.00	BUMPER RUBBER
114	19.4653.0.00	SPACER 8.12.17
115	11.2641.0.00	BRAKE LEVER BUSH ZERO
116	22.6208.0.00	FOOTREST SPRING
117	25.3305.0.00	L/H FOOTREST TR-33
118	25.1008.0.52	SLIDING BLOCK ZERO-91
119	25.2593.0.00	SLIDING BLOCK TR-34
120	16.2250.0.00	CHAIN TENS. BLOCK TR 34
121	22.8111.0.00	SPRING 8.140
122	22.4700.0.00	RETURNING STAND SPRING 125-RX
123	12.3993.0.57	STAND ZERO-91
124	16.2948.0.00	GROMMET
125	27.2930.0.00	S/ARM SPECIAL NUT 16.1,25
126	25.5577.0.00	S/ARM SPINDLE ZERO-92
127	15.4956.0.00	SWINGING ARM ZERO-91
128	11.2300.0.00	S/ARM NEEDLE BEARING 22-28.18
129	13.4920.0.00	SPACER TR-34
130	31.6394.0.00	LH FOOTREST BRACKET ZERO
131	18.8351.0.00	GREASE NIPPLE
132	11.2250.0.00	NEEDLE BEARING 15.21.22
133	10.5400.0.00	OIL SEAL 15.24.5
134	11.1973.0.00	CONNECTING ROD ZERO
135	13.4770.0.00	SPACER 10.15/26.42,5
136	27.5400.0.00	WASHER 10.22
137	28.9312.0.00	SPHERIC ARTICUL 14.28.13,5/19
138	11.6843.0.00	OIL SEAL 20.43.25.87.2.62
139	11.2884.0.00	RUSH
140	31.6397.0.00	SCREW 8.40
141	11.6390.0.00	BOLT 10.120
142	11.6374.0.00	BOLT 10.85
143	12.8840.0.00	MUFFLER COVER ZERO-91
144	27.5400.0.00	WASHER 10.22
145	13.6510.0.00	SPACER
146	13.4740.0.00	SPACER 10.20/26.19,5
147	11.2285.0.00	NEEDLE BEARING 20.26.12
148	11.2038.0.00	CONNECTING ARM ZERO-91
149	11.2727.0.00	BUSH
150	31.6393.0.00	SCREW B.20
151	22.0426.0.00	MUFFLER ZERO-92 (ALL.)
152	31.3071.0.00	SCREW 6.15
153	28.0510.0.61	REAR FRAME ZERO-92
154	28.0510.0.00	BRAKE OIL TANK TR-34/R
155	28.9725.0.00	OIL TANK BRACKET ZERO
156	27.8104.0.00	PETCOCK ZERO
157	25.9852.0.52	PETCOCK SWITCH ZERO-92

LISTA TAVOLA RICAMBI 38.6635.0.00 MOTORCYCLE ZERO-92

Riga	Articolo	Descrizione
161	22.1333.0.00	RUBBER SLEEVE ZERO
162	12.7318.0.52	FILTER COVER ZERO-91
163	16.2954.0.00	GROMMET
164	28.1269.0.52	AIR FILTER ZERO-91
165	15.2600.0.00	AIR FILTER ASSY. TR-34
166	22.3250.0.00	SPRING FOR FILTER B4
167	25.1012.0.00	REAR FENDER ZERO-92
168	15.0182.0.00	REAR LIGHT
169	21.1552.0.00	WARNING LIGHT BULB 12V-4W
170	23.1001.0.00	SPECIAL NIPPLES ZERO
171	27.2492.0.00	REAR SPOKE ZERO
172	28.9198.0.62	SILENCER ZERO-92
173	11.5451.0.00	BOLT 8.20
174	13.8556.0.00	RH REAR HUB SPACER ZERO-91
175	25.5576.0.00	REAR WHEEL AXLE ZERO-92
176	12.8945.0.00	REAR SPROCKET Z.40 5/8.1/4 ZERO-92
177	22.0794.0.58	REAR HBU ZERO-92
178	13.1713.0.00	NUT M8
179	13.3943.0.00	REAR BRAKE DISK TR-89
180	13.8557.0.00	LH REAR HUB SPACER ZERO-91
181	13.8951.0.00	S/ARM SPECIAL NUT 16.1.25
182	27.7121.0.00	WASHER 17.31.3
183	31.3009.0.00	SCREW 5.10
184	12.9827.0.62	REAR DISK BRAKE COVER ZERO-92
185	10.6668.0.00	OIL SEAL 28.25.33.49.2.62
186	13.1901.0.00	SELF-BLOCKING NUT 10
187	27.5400.0.00	WASHER 10.22
188	11.6370.0.00	BOLT 10.65
189	25.0312.0.00	REAR BRAKE PLIERS TR-34/CAMP.
190	25.5733.0.00	PLATE
191	25.0005.0.00	BRAKE PLIERS W/SUPP. PLATE TR
192	10.0403.0.00	SHOCK ABSORBER ZERO-TRUBEA
193	12.8486.0.58	CHAINGUARD ZERO-91
194	31.4831.0.00	SCREW 6.25
195	27.4800.0.00	WASHER 6.18
196	13.1301.0.00	SELF-BLOCKING NUT 6
197	15.1430.0.00	CLAMP
198	28.9854.0.57	STAND BRACKET ZERO-91
199	11.186.0.00	CHAIN TENSIONER TR-34/R
200	12.8147.0.00	TIRE 4.00.18 TUBELESS
201	12.4276.0.00	RIM 2.15.18 TUBELESS
202	31.1000.0.00	TUBELESS VALVE TR-34
203	11.4801.0.00	BOLT 6.16
204	22.1182.0.00	CONNECTING LINK 5/8.1/4
205	12.0675.0.00	CHAIN 5/8.1/4 P.98
206	16.5051.0.00	BASKET 10.15.1 COPPER
207	29.0936.0.00	REAR BRAKE HOSE ZERO

PARTICOLARI NON FIGURANTI

11.0540.0.00	TOOLBAG 250/350 G8
12.0544.0.00	CARTRIDGE
12.4303.0.00	SPARG PLUG KEY TR-240
12.4394.0.00	SCREW DRIVE TRIAL
13.3274.0.00	SWINGING ARM SPONSOR DECALS ZERO
13.3590.0.00	FRONT FENDER DECALS ZERO-92
13.3591.0.00	TANK DECALS ZERO-92
13.3592.0.00	REAR FENDER DECALS ZERO-92
13.3301.0.00	HEADLIGHT HOLDER DECAL ZERO-92
13.6268.0.00	SPACER
25.9990.0.00	TANK PROTECTION ZERO
20.0510.0.00	SILENCER KIT ZERO-92
27.0222.0.58	FRONT WHEEL ZERO-92
27.0453.0.58	REAR WHEEL ZERO
29.1126.0.61	FRONT FRAME ZERO 125/92
29.1629.0.00	EXHAUST PIPE ZERO 125

PARTS FOR MOTORCYCLE ZERO 125 CC

12.0811.0.00	CHAIN 1/2.5/16 P. 124
12.8961.0.00	REAR CROWN 1/2.5/16 Z.56 ALL.
22.0411.0.00	MUFFLER ZERO
27.0453.0.58	REAR WHEEL ZERO
29.1126.0.61	FRONT FRAME ZERO 125/92
29.1629.0.00	EXHAUST PIPE ZERO 125