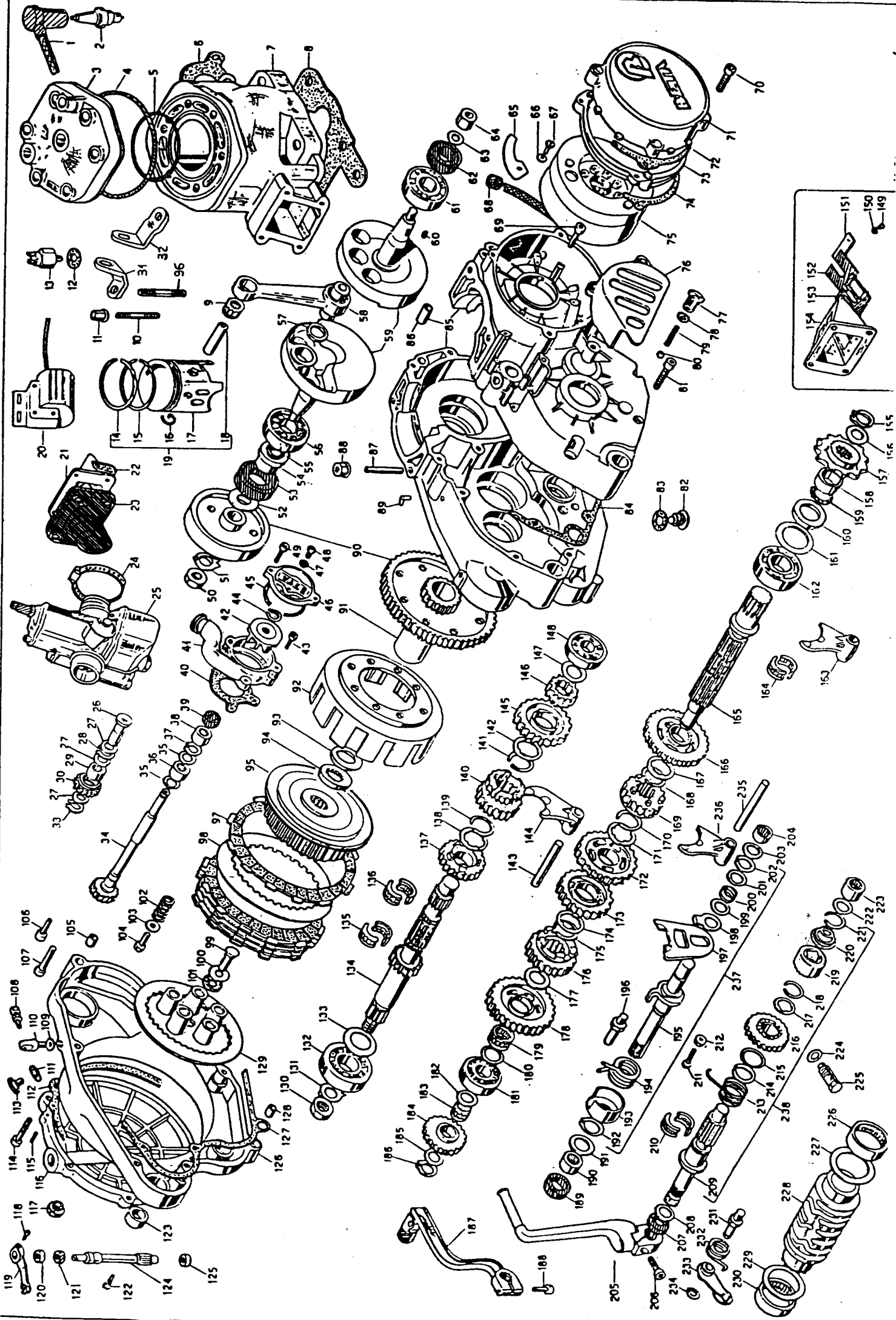


ENGINE ZEPØ 260/93



Riga	Articolo	Descrizione
1	27.1351.0.00	SPARK PLUG PROTECTOR
2	12.2510.0.00	SPARK PLUG CW 9L / N-3
3	29.1218.0.58	CYLINDER HEAD ZERO 260/93
4	10.6729.0.00	OIL SEAL 153.32.125.56.21.62
5	10.6725.0.00	CIL SEAL ZERO-92
6	12.8070.0.00	GASKET ZERO
7	12.5178.0.58	CYLINDER D.76 ZERO
8	16.6171.0.00	CYLINDER CRANKCASE GASKET ZERO
9	16.1675.0.00	NEEDLE BEARING 18.22.25
10	25.9814.0.00	STUD BOLT 8.57
11	13.1711.0.00	NUT M6
12	16.4950.0.00	GASKET B.20.1.3
13	29.1156.0.00	THERMOSTAT ZERO
14	28.5217.0.00	FISTON RING D.76 ZERO
15	10.4260.0.00	CIRCLIP 18
16	25.8667.0.00	FISTON 76 ZERO
17	28.9410.0.00	FISTON PIN 18.59
18	25.8667.5.00	COMP.FISTON D.76 ZERO
19	11.6036.0.00	ELECTRONIC H.T. COIL
20	31.0209.8.00	REED VALVE TR-32
21	16.9233.0.00	VALVE GASKET 200-TR/TV
22	27.2337.0.00	INLET MANIFOLD TR-34
23	15.1538.0.00	CLAMP 33/33
24	12.0489.0.00	CARBURETOR MINIMI ZERO-NR26/208-
25	25.5714.0.00	FUEL MIXER DRIVING PIN R1/85
26	27.3550.0.00	WASHER 10.17
27	28.2270.0.00	SEEEER 10E
28	11.2210.0.00	NEEDLE BEARING 10.14.10
29	18.8560.0.00	GEAR
30	28.9504.0.00	LH BRACKET ZERO-93
31	28.9505.0.00	RH BRACKET ZERO-93
32	26.2270.0.00	SEEEER 10E
33	10.2771.0.00	COUNTER SHAFT ZERO-92
34	27.5856.0.00	WASHER 10.17
35	11.2210.0.00	NEEDLE BEARING 10.14.10
36	27.5850.0.00	WASHER 10.17
37	11.2210.0.00	NEEDLE BEARING 10.14.10
38	10.4452.0.00	OIL SEAL 10.18.5/8
39	16.7586.0.00	PUMP BODY ZERO-93
40	12.9192.0.58	PUMP FAN ZERO-92
41	31.2182.0.00	PUMP FAN ZERO-92
42	31.3001.0.00	SCREW 5.18
43	28.2266.0.00	SEEEER 9E
44	10.6687.0.00	CIL SEAL 34.65.38.61.1.78
45	12.6786.0.58	PUMP COVER ZERO
46	16.4730.0.00	GASKET 6.12.1.5
47	31.8000.0.00	SCREW 6.7
48	31.8791.0.00	SCREW 5.12
49	13.2900.0.00	SPECIAL NUT 14.1.25.8.5
50	27.7476.0.00	WASHER 14
51	22.3197.0.00	SPRING ZERO
52	10.6500.0.00	OIL SEAL 30.32.10
53	13.3514.0.00	SPACER ZERO
54	10.4643.0.00	OIL SEAL 20.24.25.48.2.62
55	12.9946.0.00	BALL BEARING 25.62.17 NYLON
56	27.7372.0.00	WASHER 22.38.1
57	11.0369.8.00	CONNECTING ROD ASSY. TR-32
58	10.0041.0.00	CRANKSHAFT TR-34/CAMP.
59	12.4600.0.00	WOODRUFF KEY 3.7.9.7
60	12.9944.8.00	BALL BEARING 25.52.18 NYLON
61	10.6465.0.00	OIL SEAL 25.40.7
62	27.5775.0.00	SPECIAL WASHER
63	13.2710.0.00	SPECIAL NUT 12.1.25.17
64	25.5805.0.00	PLATE
65	27.3460.0.00	WASHER 4.16
66	31.2280.0.00	SCREW 4.12
67	28.9150.0.00	SILENT BLOCK
68	31.2580.0.00	SCREW 4.14
69	31.5103.0.00	SCREW 6.15
70	12.6565.0.58	MAGNETO COVER ZERO-93
71	16.7511.0.00	MAGNETO COVER GASKET
72	12.6862.0.60	INTERNAL MAGNETO COVER ZERO
73	16.7506.0.00	MAGNETO COVER GASKET TR-125
74	31.0266.0.00	ELECTRIC PLUNGER ZERO
75	12.7566.0.58	FIRIC COVER ZERO-93
76	12.7566.0.58	FIRIC COVER ZERO-93

Riga	Articolo	Descrizione
77	11.7200.0.00	HOLLOW BOLT
78	16.5200.0.00	GASKET 12.14.1.5
79	22.4200.0.00	HOLLOW BOLT SPRING
80	28.6935.0.00	BALL 5/16
81	31.4331.0.00	SCREW 6.40
82	29.0045.0.00	MAGNETIC FLUS
83	16.5360.0.00	GASKET 16.22.5.1
84	16.5572.0.00	CRANKCASE GASKET 250-EX/85
85	12.0623.0.60	CRANKCASE ZERO-93 MS
86	16.4001.0.00	DOMEL 10.30
87	25.9809.0.00	STUD BOLT 8.50
88	13.1712.0.00	NUT M6
89	27.2336.0.00	BREATHER PIPE HOSE TR-32
90	29.0726.0.00	PRIMARY DRIVE TR-93
91	11.2710.0.00	RUSH
92	12.2076.0.00	CLUTCH HOUSING ZERO-93
93	27.7263.0.00	WASHER 20.30.0.5
94	27.6585.0.00	WASHER ZERO-92
95	29.1014.0.00	CLUTCH CENTER ZERO-93
96	25.9812.0.00	STUD BOLT 8.60
97	13.4330.0.00	CLUTCH FLATE TR-92
98	13.3835.0.00	STEEL FLATE TR-92
99	25.4510.0.00	TOOTHED CLUTCH PIN TR-34/CAMP.
100	27.7405.0.00	WASHER 18.27.0.2
101	16.1136.0.00	NEEDLE BEARING 10.22.2.8
102	22.6503.0.00	CLUTCH SPRING TR-34/CAMP.
103	27.5750.0.00	WASHER 6.16.1
104	31.3105.0.00	SCREW 6.15
105	16.3701.0.00	DOMEL 9.15
106	31.4500.0.00	SCREW 6.30
107	31.4851.0.00	SCREW 6.25
108	27.2701.0.00	CLUTCH ADJUSTER WITH NUT
109	16.4900.0.00	GASKET B.14.1.5
110	23.1301.0.00	RATCHET
111	16.5360.0.00	GASKET 16.22.5.1
112	16.7155.0.00	EXT. CLUTCH COVER GASKET TR/89
113	29.1029.0.00	OIL PLUS
114	31.3103.0.00	SCREW 6.15
115	16.3570.0.00	DOKER TR/89
116	12.6310.0.58	EXT. CLUTCH COVER ZERO-92
117	29.1003.0.00	OIL FLUG ZERO-93
118	31.3000.0.00	SCREW 5.16
119	21.3502.0.00	CLUTCH PIN LEVER
120	10.4460.0.00	OIL SEAL 10.20.4
121	11.2230.0.00	NEEDLE BEARING 14.20.12
122	31.8800.0.00	SPECIAL SCREW
123	11.3105.0.00	SINTERED BUSH 125-81
124	25.4420.0.00	CLUTCH PIN TR.
125	11.2207.0.00	NEEDLE BEARING 9.13.10
126	12.6864.0.58	CLUTCH COVER ZERO-91
127	16.7167.0.00	CLUTCH COVER GASKET 125-81
128	16.3701.0.00	DOMEL 9.15
129	12.2895.0.00	PRESSURE PLATE ZERO-93
130	27.7476.0.00	WASHER 14
131	12.9900.0.00	BALL BEARING 20.32.15
132	27.7383.0.00	WASHER 20.30.0.5
133	10.2333.8.00	MAIN SHAFT TR-34/CAMP.
134	16.1487.0.00	NEEDLE BEARING 16.21.10 -2 PCS
135	16.1487.0.00	NEEDLE BEARING 16.21.10 -2 PCS
136	18.2849.8.00	5TH GEAR - MAINSHAFT
137	27.7386.0.00	SPECIAL WASHER
138	26.8545.0.00	SEEEER 19 SM
139	18.3771.8.00	2/4 GEAR-MAINSHAFT
140	26.8545.0.00	SEEEER 19 SM
141	27.7386.0.00	SPECIAL WASHER
142	25.5106.0.00	SELECTOR PIN 10.67 125/76
143	15.6456.0.00	SELECTOR FORK 26.5 125-76
144	16.3877.8.00	6TH GEAR - MAINSHAFT
145	18.3821.8.00	END GEAR - MAINSHAFT
146	27.6450.0.00	WASHER 15.25
147	12.9400.0.00	BALL BEARING 15.25.11
148	12.9400.0.00	BALL BEARING 15.25.11
149	21.2202.0.00	SCREW 5.6
150	27.3401.0.00	WASHER 3
151	25.5848.0.00	FETAL FITTING FLATE 4.14
152	21.1545.0.00	OUTER FETAL

Riga	Articolo	Descrizione
153	21.1540.0.00	INNER FETAL
154	31.1354.0.00	REED VALVE TR-32/FD
155	26.2540.0.00	SEEEER 20 E
156	27.7386.0.00	SPECIAL WASHER
157	25.6081.0.00	SPROCKET 2.10
158	13.5521.0.00	SFROCKET SPACER
159	10.4644.0.00	OIL SEAL 20.23.23.91.1.76
160	10.4656.0.00	OIL SEAL 25.37.3
161	27.7415.0.00	WASHER 27.45.0.2
162	12.9900.0.00	BALL BEARING 20.52.15
163	15.6455.0.00	SELECTOR FORK 26.5 TR-200/83
164	16.1657.0.00	NEEDLE BEARING 18.22.10 -2 PCS
165	10.2533.8.00	LAYSHAFT TR-90
166	18.5311.8.00	2ND GEAR - LAYSHAFT TR-34
167	27.7387.0.00	SPECIAL WASHER
168	26.2546.0.00	SEEEER 20 SW
169	18.6711.8.00	6TH GEAR - LAYSHAFT TR-34
170	26.2546.0.00	SEEEER 20 SW
171	27.7387.0.00	SPECIAL WASHER
172	18.5693.8.00	3 RD GEAR-LAYSHAFT
173	18.6481.8.00	4 TH GEAR-LAYSHAFT
174	27.7387.0.00	SPECIAL WASHER
175	28.2546.0.00	SEEEER 20 SW
176	18.6641.8.00	5TH GEAR - LAYSHAFT
177	27.7856.0.00	WASHER 18.27.0.2
178	18.4307.8.00	1ST GEAR - LAYSHAFT
179	16.1456.0.00	NEEDLE BEARING 18.22.10
180	27.6450.0.00	WASHER 15.25
181	12.9400.0.00	BALL BEARING 15.35.11
182	16.6450.0.00	WASHER 15.25
183	16.1286.0.00	NEEDLE BEARING 15.19.10
184	18.6780.0.00	GEAR
185	27.6450.0.00	WASHER 15.25
186	28.2360.0.00	SEEEER 15E
187	21.2113.0.00	SHIFT LEVER ZERO-93
188	11.4951.0.00	FOL 4.25
189	10.4800.0.00	OIL SEAL 12.22.5
190	11.2220.0.00	NEEDLE BEARING 12.12.2
191	27.6030.0.00	WASHER 12.12
192	28.2490.0.00	SEEEER 16.1 E
193	28.1595.0.00	SPRING FETAINER
194	22.7800.0.00	SELECTOR SPRING
195	10.1316.0.00	SELECTOR SHAFT 125-76
196	25.4552.0.00	FIN FOR RETURNING SPRING
197	31.2096.0.00	SHIFT CONTROL FORK 125/76
198	27.7855.0.00	WASHER
199	27.6000.0.00	WASHER 12.22
200	22.6800.0.00	SHIFT CONTROL SPRING
201	27.6000.0.00	WASHER 12.22
202	28.2275.0.00	SEEEER 12E
203	27.6000.0.00	WASHER 12.22
204	11.2220.0.00	NEEDLE BEARING 12-18.12
205	21.5511.0.00	KICKSTARTER LEVER ZERO
206	31.3801.0.00	SCREW 6.25
207	10.5800.0.00	OIL SEAL 16.24.3
208	27.6750.0.00	WASHER 16.25
209	10.1510.8.00	STARTER SHAFT 125-CR/81
210	16.1487.0.00	NEEDLE BEARING 16.21.10 -2 PCS
211	31.4500.0.00	SCREW 6.30
212	13.1150.0.00	NUT 6.3.5
213	22.7897.0.00	KICKSTARTER SPRING 125/81
214	28.2545.0.00	SEEEER 19 SM
215	27.7386.0.00	SPECIAL WASHER
216	18.1460.8.00	STARTER GEAR 125-CR/81
217	27.7386.0.00	SEEEER 19 SM
218	26.2545.0.00	SEEEER 19 SM
219	22.1410.8.00	KICKSTARTER SLEEVE 125-CR/81
220	22.2356.0.00	CONICAL SPRING
221	26.2546.0.00	SEEEER 20 SW
222	27.6450.0.00	WASHER 15.25
223	11.2240.0.00	NEEDLE BEARING 15.21.12
224	16.5500.0.00	GASKET 12.16.1.5
225	11.6550.0.00	NEEDLE BEARING 15.25
226	11.2240.0.00	NEEDLE BEARING 15.21.12
227	27.7425.0.00	WASHER 20.38
228	16.1567.0.00	CAM ZIFU-91

P.T.O.

Riga	Articolo	Descrizione
229	27.7425.0.00	WASHER 30.38
230	11.2340.0.00	NEEDLE BEARING 30.37.12
231	25.5500.0.00	FIN
232	22.3826.0.00	LOCATING SPRING 125-76
233	21.0301.8.00	LOCATING LEVER 260-69
234	28.2825.0.00	SEEBER BE
235	25.5107.0.00	SELECTOR PIN 10.103.5
236	15.6657.0.00	SELECTOR FORK 34.5.125-76
237	10.1316.8.00	COMPLETE SELECTOR SHAFT TR-34
238	22.0500.8.00	COMPLETE KICKSTARTER 125-81

PARTICOLARI NON FIGURANTI

12.0065.0.00	GEARBOX TR-93
29.0726.8.00	PRIMARY DRIVE ASSY TR-93
28.0691.8.00	KIT OIL SEAL ZERO-92
29.0689.8.00	KIT OIL SEAL ZERO-93

PARTS FOR ENGINE 240 CC

12.5179.0.58	CYLINDER D.72.8 ZERO
25.8448.0.00	PISTON 72.8 ZERO
28.5218.0.00	PISTON RING D.72.8 ZERO
29.1219.0.58	CYLINDER HEAD ZERO 240/91

PARTS FOR ENGINE 125 CC

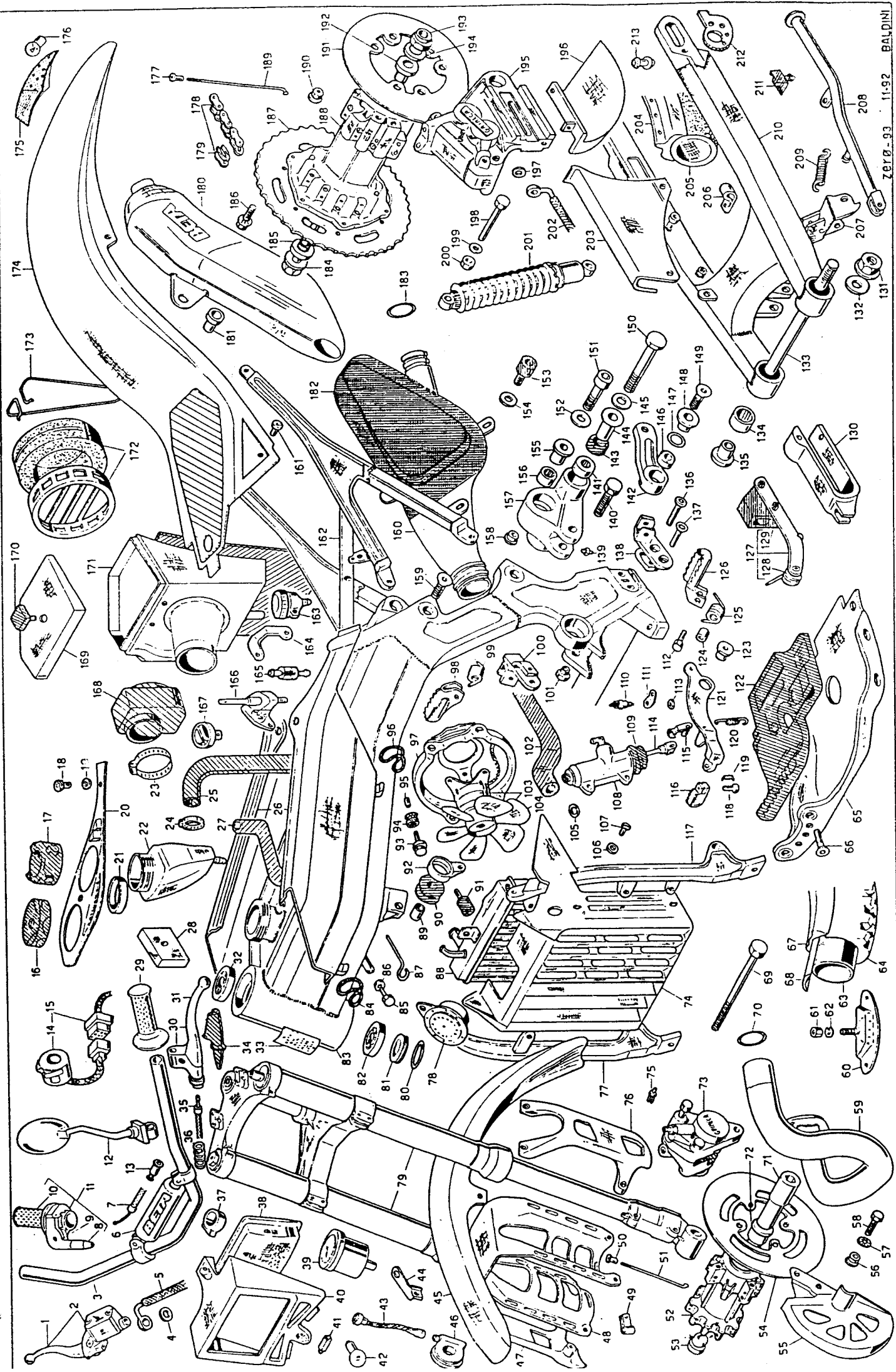
10.0059.0.00	CRANKSHAFT 125-CR/8E
10.4257.0.00	CIRCLIP 16.1.2
10.5000.0.00	OIL SEAL 7.66.11.2E.1.78
10.6520.0.00	OIL SEAL 17.86.23.10.2.2.2
10.6657.0.00	OIL SEAL 60.05.63.61.1.78
10.6698.0.00	OIL SEAL 107.67.111.23.1.78
12.0099.0.00	GEARBOX TR-90
12.0618.0.60	CRANKCASE ZERO 125
12.2513.0.00	SPARK PLUG NEC
12.5183.0.58	CYLINDER D.54 ZERO 125
12.6559.0.58	MAGNETO COVER TR-125
12.9156.0.58	PUMP BODY ZERO
12.5317.0.00	SPACER
12.1436.0.00	NEEDLE BEARING
16.1718.0.00	NEEDLE BEARING 20.26.20
16.5050.0.00	GASKET 10.15.1
16.5571.0.00	CRANKCASE GASKET 125-RX/85
16.6174.0.00	CYLINDER CRANKCASE ZERO-125
16.8066.0.00	GASKET 125-76
25.6105.0.00	SPROCKET 11 TEETH TR-125
25.8612.0.00	PISTON D.54 ZERO-125
25.8612.8.00	COMPL. PISTON D.54 ZERO-125
27.6751.0.00	WASHER 16.26.1
28.5569.0.00	PISTON RING D.54 ZERO-125
28.9100.0.00	BREATHER PIPE
28.9398.0.00	PISTON PIN 16 125/76
29.0729.8.00	PRIMARY DRIVE ASSY
29.1213.0.58	CYLINDER HEAD ZERO 125
31.0297.0.00	FLYWHEEL TR-125 12V
28.0667.8.00	KIT OIL SEAL ZERO-125/92
28.0804.8.00	GASKET SET ZERO-125/92

We like to inform you that, starting from 11th January 1993, on all trial bikes we have assembled a gearbox with 3rd and 4th speed gears of layshaft on roller cages.

Therefore, for what concern spare parts, 3rd and 4th gears of layshaft, for gearbox 12.0065, have been replaced with the following set:

- Code 10.2936.8.00	Layshaft
- Code 18.5894.8.00	3rd gear on Layshaft
- Code 18.6482.8.00	4th gear on Layshaft
- Code 16.1657.0.00	Cage 2 pieces (Q.ty 2)

MOTORCYCLE ZERØ -93



Riga Articolo Descrizione

1	21.2706.0.00	FRONT BRAKE LEVER
2	21.0210.0.00	FRONT BRAKE LEVER TR-93
3	22.2045.0.00	MANUBRARI ZERO-91
4	16.5031.0.00	GASKET 10.13.1 COPPER
5	29.0917.0.00	FRONT BRAKE HOSE ZERO-93
6	16.2339.0.33	HANDLEBAR RUBBER ZERO-93
7	27.1482.0.32	HANDLEBAR RUBBER ZERO-93
8	20.0322.0.00	THROTTLE CABLE ZERO
9	12.3596.0.00	THROTTLE KIT
10	22.1860.0.00	THIST GRIP COVER TR-34
11	22.1509.0.00	GRIP D.24 TRIAL
12	26.9232.0.00	REAR VIEW MIRROR TRIAL
13	16.3388.0.00	GROMMET
14	13.3664.0.00	SWITCH TR
15	18.0132.0.00	ELECTRIC EQUIPMENT ZERO
16	29.1031.0.00	TANK PLUG TRIAL
17	29.0140.0.00	RADIATOR CAP FOUR
18	27.6456.0.00	WASHER 6.14.1
19	12.8901.0.39	TANK COVER ZERO-92
20	10.6760.0.00	REINFORCING RING
21	26.8563.0.00	LIQUID TANK ZERO-91
22	15.1538.0.00	CLAMP 33/33
23	15.1538.0.00	CLAMP 17/29
24	29.1573.0.00	UPPER RADIATOR TUBE ZERO-91
25	25.9889.0.31	TANK PROTECTION ZERO-93
26	27.2344.0.00	RADIATOR MANIFOLD
27	27.2344.0.00	MOTOR-OIL REGULATOR-12
28	22.1829.0.00	GRIP D.28 TRIAL
29	22.1829.0.00	CLUTCH LEVER TR-34
30	21.0289.0.00	CLUTCH LEVER ONLY TR-33
31	11.9830.0.00	CONICAL BEARING 20.42.15
32	25.5787.0.00	PLATE
33	16.3388.0.00	GROMMET
34	29.1443.0.32	CLUTCH CABLE ZERO
35	26.3553.0.00	PROTECTION SPRING
36	25.2322.0.32	PLATE
37	16.4703.0.00	OTTICAL GROUP ZERO
38	22.0936.0.00	SPEEDOMETER TR-33
39	22.0936.0.31	HEADLIGHT HOLDER ALP-240/92
40	21.1539.0.00	BULL B.12V-104
41	21.1544.0.00	BULL 12V-25/25W ZERO
42	29.2351.0.32	SPEEDOMETER CRITACH ZERO
43	28.9723.0.00	SPEEDOMETER CRITACH ZERO
44	23.1517.0.58	FRONT FENDER ZERO-93
45	27.2346.0.00	SPEEDOMETER ZERO
46	25.9893.0.32	FRONT FENDER PROTECTION ZERO-93
47	28.9833.0.00	FENDER BRACKET ZERO
48	15.1460.0.00	CLIP 4-RUBBER 10X15
49	27.2418.0.00	FRONT SPOKE ZERO
50	27.2418.0.00	FRONT SPOKE ZERO
51	13.8546.0.00	RH FRONT HUB SPACER ZERO-91
52	13.3947.0.00	FRONT BRAKE DISK ALP-240
53	13.3947.0.00	FRONT BRAKE DISK ALP-240
54	13.8546.0.32	FRONT DISK BRAKE COVER ZERO-93
55	13.6200.0.00	SPACER TR-89
56	22.3198.0.00	CUP SPRING TR-89
57	11.4901.0.00	ROD 6.20
58	29.1626.0.00	EXHAUST PIPE ZERO-92
59	15.1750.0.00	TIRE FASTENER
60	13.1700.0.00	NUT 8.8
61	13.1700.0.00	NUT 8.8
62	27.4800.0.00	WASHER 8
63	12.1641.0.00	TUBE 2.75.21 MICHELIN
64	12.7940.0.00	TIRE 2.75.21 TR-123
65	12.3213.0.00	BUFFER ZERO
66	31.6394.0.25	SCREW B.25
67	12.4248.0.00	BEAD 21.25
68	15.3820.0.00	ROD B.140
69	11.5797.0.00	ROD B.140
70	10.8710.0.00	OIL SEAL 32.07.27.31.2.62
71	23.3591.0.00	FRONT WHEEL RALE TR-240
72	13.6547.0.00	LH FRONT HUB SPACER ZERO-91
73	25.0304.0.00	FRONT BRAKE FLIERS TR-93
74	15.2330.0.32	RADIATOR COVER ZERO-93
75	12.4630.0.00	EXPANDER RIVET
76	25.9894.0.32	LH FORK TUBE PROTECTION ZERO-92
77	29.1117.0.00	RH FRONT FRAME ZERO-91
78	10.0920.0.00	HORN TR-33
79	15.0798.0.00	REVERSE FORK ZERO-93
80	10.6666.0.00	OIL SEAL 34.40.39.84.2.62
81	10.6739.0.00	F/FORK ALUMINIUM RING
82	12.9830.0.00	CONICAL BEARING 20.42.15
83	29.1116.0.00	FRONT FRAME ZERO-91

Riga Articolo Descrizione

84	10.6892.0.00	OIL SEAL- 50.32.54.08.1.78
85	11.4751.0.00	POLT 6.23
86	13.1301.0.00	SELF-BLOCKING NUT 6
87	22.3931.0.00	SPRING
88	27.2346.0.00	RADIATOR ZERO-91
89	13.5455.0.00	SPACER
90	28.9181.0.00	SILENT BLOCK
91	28.9183.0.00	RADIATOR SILENT BLOCK ZERO
92	11.1983.0.00	CONNECTING ROD ZERO-91
93	11.4906.0.00	ROD 6.20
94	28.9150.0.00	SILENT BLOCK
95	11.2850.0.00	FENDER RUSH
96	10.6897.0.00	OIL SEAL 34.65.38.61.1.78
97	28.9801.0.00	ELECTRIC FAN BRACKET ZERO
98	25.3300.0.00	RH FOOTREST TR-33
99	22.6601.0.00	FOOTREST SPRING
100	28.9923.0.00	RH FOOTREST BRACKET ZERO
101	11.2640.0.00	BUSH ZERO
102	29.1579.0.00	RADIATOR TUBE ZERO-93
103	14.0101.0.00	COMPL. ELECTRIC FAN ZERO-91
104	31.2153.0.00	FAN ZERO
105	16.5051.0.00	GASKET 10.15.1 COPPER
106	27.6457.0.00	WASHER 5.10.1
107	31.2981.0.00	SCREW 5.12
108	25.9117.0.00	REAR BRAKE PUMP
109	16.3392.0.00	GROMMET FOR 25.9116
110	18.8700.0.00	STOP SWITCH TR-33
111	28.9526.0.00	SWITCH STOP BRACKET ZERO
112	11.5570.0.00	ROD B.45
113	13.2182.0.00	NUT
114	10.8604.0.00	REAR BRAKE ROD ZERO-93
115	28.913.0.00	PUMP PIN W/SPRING
116	22.9013.0.00	FOOTREST HUB
117	24.9013.0.00	FOOTREST HUB
118	29.1118.0.00	LH FRONT FRAME ZERO-91
119	25.5445.0.00	BRAKE PEDAL PIN TR-34
120	22.6809.0.00	RET. BRAKE PEDAL SPRING R4
121	22.6813.0.00	RET. BRAKE PEDAL SPRING ZERO-93
122	22.2803.0.00	BRAKE PEDAL
123	11.2231.0.00	BUMPER RUBBER
124	11.2261.0.00	BRAKE LEVER RUSH ZERO
125	13.4653.0.00	SPACER B.12.17
126	22.6202.0.00	FOOTREST SPRING
127	25.3305.0.00	L/H FOOTREST TR-33
128	25.2995.0.00	SLIDING BLOCK TR-34
129	22.8111.0.00	SPRING
130	16.2250.0.00	CHAIN TENS. BLOCK TR 34
131	29.1008.0.28	SLIDING BLOCK ZERO-91
132	13.2951.0.00	S/ARM SPECIAL NUT 16.1.25
133	25.5277.0.00	WASHER 16.25
134	11.2300.0.00	S/ARM NEEDLE BEARING 22.28.19
135	31.6395.0.00	SCREW B.30
136	31.6394.0.00	SCREW B.30
137	28.9724.0.00	LH FOOTREST BRACKET ZERO
138	18.8351.0.00	GREASE NIPPLE
139	11.6300.0.00	ROD 10.50
140	11.2250.0.00	NEEDLE BEARING 15.21.22
141	11.1973.0.00	CONNECTING ROD ZERO
142	10.5400.0.00	OIL SEAL 15.24.3
143	13.4770.0.00	SPACER 10.15/26.42.3
144	27.5400.0.00	WASHER 10.22
145	28.9312.0.00	SPHERIC ARTICUL 14.28.13.5/19
146	10.6645.0.00	OIL SEAL 20.63.23.87.2.62
147	11.2894.0.00	BUSH
148	31.6397.0.00	SCREW 8.40
149	11.6390.0.00	ROD 10.120
150	31.6360.0.00	SCREW 10.85
151	27.5400.0.00	WASHER 10.22
152	28.9194.0.00	SILENT-BLOCK
153	16.8853.0.00	INSULATING GAS/SET 6.2.18.2
154	13.4740.0.00	SPACER 10.20/25.19.5
155	11.2285.0.00	NEEDLE BEARING 20.26.11
156	11.2038.0.00	CONNECTING ARM ZERO-91
157	11.2297.0.00	BUSH
158	11.2297.0.00	BUSH
159	31.6393.0.00	SCREW B.20
160	22.0429.0.00	MUFFLER ZERO-93
161	31.7071.0.00	SCREW 6.13
162	29.1109.0.00	REAR FRAME ZERO-93
163	28.0310.0.00	BRAKE OIL TANK TR-34/5
164	28.9725.0.00	OIL TANK BRACKET ZERO
165	15.2465.0.00	GASOLINE FILTER
166	27.8104.0.00	FETCOCK ZERO

Riga Articolo Descrizione

167	25.8852.0.33	FETCOCK SWITCH ZERO
168	22.1333.0.00	RUBBER SLEEVE ZERO
169	12.7318.0.32	FILTER COVER ZERO-91
170	16.8794.0.00	GROMMET
171	27.2346.0.00	AIR FILTER ZERO-91
172	15.2600.0.00	AIR FILTER ASSY. TR-34
173	22.3250.0.00	SPRING FOR FILTER R4
174	23.1936.0.31	REAR FENDER ZERO-93
175	15.0182.0.00	REAR LIGHT
176	21.1532.0.00	WARNING LIGHT BULLB 12V-24
177	23.1001.0.00	SPECIAL NIPPLER ZERO
178	12.0576.0.00	CHAIN 3/8.1/4. F.98
179	22.1122.0.00	CONNECTING LINK 5/8.1/4
180	28.9198.0.32	SILENCER ZERO-93
181	13.6510.0.00	SPACER
182	12.8840.0.00	MUFFLER COVER ZERO-91
183	10.6648.0.00	OIL SEAL 28.26.37.95.2.62
184	25.8492.0.00	REAR WHEEL 2.42.16.24.6
185	13.8556.0.00	RH REAR HUB SPACER ZERO-91
186	11.4431.0.00	ROD 8.20
187	12.8943.0.00	REAR FENDER COVER ZERO-92
188	22.0794.0.32	REAR HUB ZERO-92
189	27.2492.0.00	REAR SPARE ZERO
190	13.1713.0.00	NUT M8
191	13.3923.0.00	REAR BRAKE DISK ZERO-93
192	13.8537.0.00	LH REAR HUB SPACER ZERO-91
193	13.8560.0.00	REAR WHEEL NUT 16.1.25
194	27.7121.0.00	WASHER 17.31.3
195	25.0306.0.00	REAR BRAKE FLIERS TR-93
196	12.8888.0.32	REAR DISK BRAKE COVER ZERO-93
197	16.5321.0.00	GASKET 10.15.1 COPPER
198	11.6370.0.00	ROD 10.65
199	27.5400.0.00	WASHER 10.22
200	13.1901.0.00	SELF-BLOCKING NUT 10
201	10.0370.0.00	SHOCK ABSORBER ZERO-93
202	29.0946.0.00	REAR BRAKE HOSE ZERO-93
203	12.8496.0.32	CHAIGUARD ZERO-91
204	12.4276.0.00	RIM 2.15.18 TUBELESS
205	13.8167.0.00	TIRE 4.00.18 TR 1-11 TEL
206	15.1430.0.00	CLAMP
207	25.9857.0.66	STAND BRACKET ZERO-93
208	12.3993.0.66	STAND ZERO-93
209	27.4700.0.00	WASHER 7.21
210	15.4999.0.00	SHIMMER ARM ZERO-93
211	16.2949.0.00	GROMMET
212	29.1186.0.00	CHAIN TENSIONER TR-34/R
213	31.1000.0.00	TUBELESS VALVE TR-34

PARTICOLARI NON FIGURANTI

11.0540.0.00	TOOLBAG 250/350 65
12.0564.0.00	CARTRIDGE
12.4303.0.00	SPARG PLUG KEY TR-240
12.4324.0.00	SCREW DRIVE TRIAL
12.9801.0.00	BALL BEARING 20.42.12
12.9840.0.00	BALL BEARING 20.42.16
13.3309.0.00	SWINGING ARM SPONGS DECALS ZERO-93
13.3310.0.00	FRONT FENDER DECALS ZERO-93
13.3311.0.00	HEADLIGHT HOLDER DECAL ZERO-93
13.3312.0.00	REAR FENDER DECALS ZERO-93
13.3313.0.00	TANK DECALS ZERO-93
13.3314.0.00	DECALS SET ZERO-93
13.6267.0.00	SPACER
13.6268.0.00	SPACER
20.0510.0.00	SILENCER KIT ZERO-92
22.2837.0.31	HEADLIGHT HOLDER ZERO-93
13.3324.0.00	HEADLIGHT HOLDER DECAL ZERO-93
27.0219.0.32	FRONT WHEEL ZERO-93
27.0461.0.32	REAR WHEEL ZERO-93

PARTS FOR MOTORCYCLE ZERO 125 CC

12.0811.0.00	CHAIN 1/2.5/16 P. 124
12.8942.0.00	REAR CROWN 1/2.5/16 P. 25 ALL.
22.0424.0.00	MUFFLER ZERO-125/93
25.8787.0.00	IDENTIFICATION PLATE 85
27.0462.0.32	REAR WHEEL ZERO-125/93
28.9197.0.32	SILENCER ZERO-93
27.1125.0.00	FRONT FRAME ZERO 125
29.1627.0.60	EXHAUST PIPE ZERO-125